

Computer-based Exam Side-View Webcam Details

Overview

All candidates taking computer-based exams are required to use side-view webcams. Those who don't will have their exam event invalidated. A room and workspace scan will still be required prior to each exam session.

The side-view webcam placement allows more visibility of your workspace to ensure a sufficiently secure exam environment. Only one side-view webcam is required. No other webcam is needed during the exam. Please review the placement details below and check out the short demonstration video on [our YouTube page](#).

The webcam placement must show a clear view of the following:

- Monitors in workspace (only one monitor may be used during the exam).
- You and the entire surface of your workspace.
- Dry erase whiteboard (if being used).

Below are a few hints to help you achieve an acceptable side-view webcam feed:

- Place the webcam:
 - at least six inches above the workspace surface;
 - three to four feet away from where you are sitting.
- Webcam cord will likely need to be at least five feet long.
- Use only one webcam during your exam.



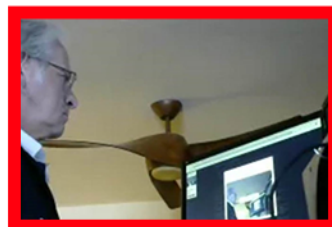
✓ Acceptable Side-View



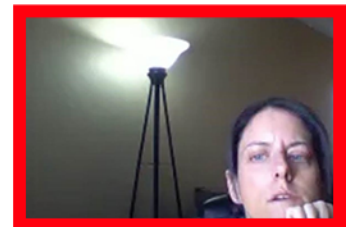
✓ Acceptable Side-View



✗ Unacceptable Side-View
Cannot see entire monitor
or entire workspace



✗ Unacceptable Side-View
Cannot see surface
of workspace



✗ Unacceptable Side-View
Cannot see monitor
or entire workspace