

Computer-based Exam Side-View Webcam Details

Overview

You are required to use a side-view webcam that displays your entire testing area throughout the exam for live proctors to review. If you don't, you will have your exam event invalidated. A room and workspace scan will still be required prior to each exam session.

The side-view webcam placement allows more visibility of your workspace to ensure a sufficiently secure exam environment. Only one side-view webcam is permitted. Please review the placement details below and check out the short demonstration video on [our YouTube page](#).

The webcam placement must show a clear view of the following:

- You and the entire surface of your workspace.
- All devices on your workspace, including the entire screen.
(Only one monitor may be used during the exam.)
- Dry erase whiteboard (if being used).

Here are instructions to achieve an acceptable side-view webcam feed:

- Place the webcam:
 - at least two feet above the workspace surface.
 - four to six feet from where you are sitting.
- Use a webcam cord that is at least six feet long. An extension cord may be needed. Please [click here](#) for examples.
- Use only one keyboard and one mouse.

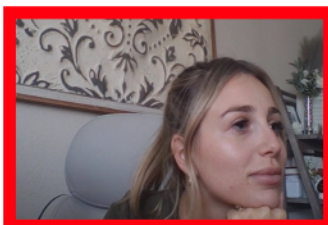
✓ Acceptable Side-View



✗ Unacceptable Side-Views



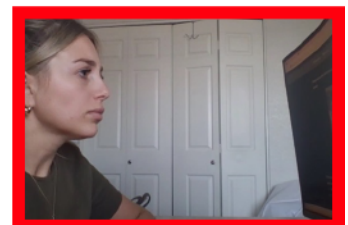
Not a side view



Too close



Cannot see screen



Cannot see workspace