

Computer-based Exam Side-View Webcam Details

Overview

You are required to use a side-view webcam that displays your entire testing area throughout the exam for live proctors to review. If you don't, you will have your exam event invalidated. You may be asked to perform a routine scan of your workspace during the exam. ABR staff will provide instructions if this procedure is needed.

The side-view webcam placement allows more visibility of your workspace to ensure a sufficiently secure exam environment. Only one side-view webcam is permitted. Please review the placement details below and watch the short demonstration video on [our YouTube page](#).

The side-view webcam placement must show a clear view of the following:

- You, your hands, and your mouse. To help with monitoring, please keep your hands visible.
- The entire surface of your workspace, including all devices and the exam screen. Only one monitor may be used during the exam.
- Dry erase whiteboard (if being used).

Here are instructions to achieve an acceptable side-view webcam feed:

- Place the webcam:
 - at least two feet above the workspace surface.
 - four to six feet from where you are sitting.
- Use a webcam cord that is at least six feet long. An extension cord may be needed. Please [click here](#) for examples.
- Use only one keyboard and one mouse.

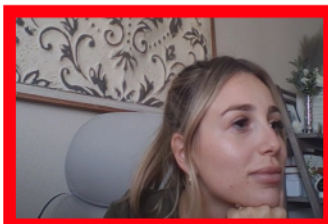
✓ Acceptable Side-view



✗ Unacceptable Side-views



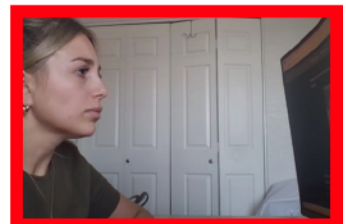
Not a side view



Too close



Cannot see screen



Cannot see workspace